

JVC

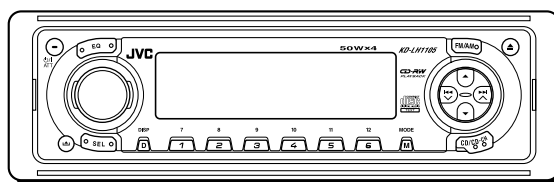
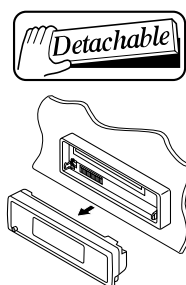
SCHEMATIC DIAGRAMS

CD RECEIVER

KD-LH1105

CD-ROM No.SML200303


<p>Area suffix</p> <p>U ----- Other Areas</p>
--




Contents

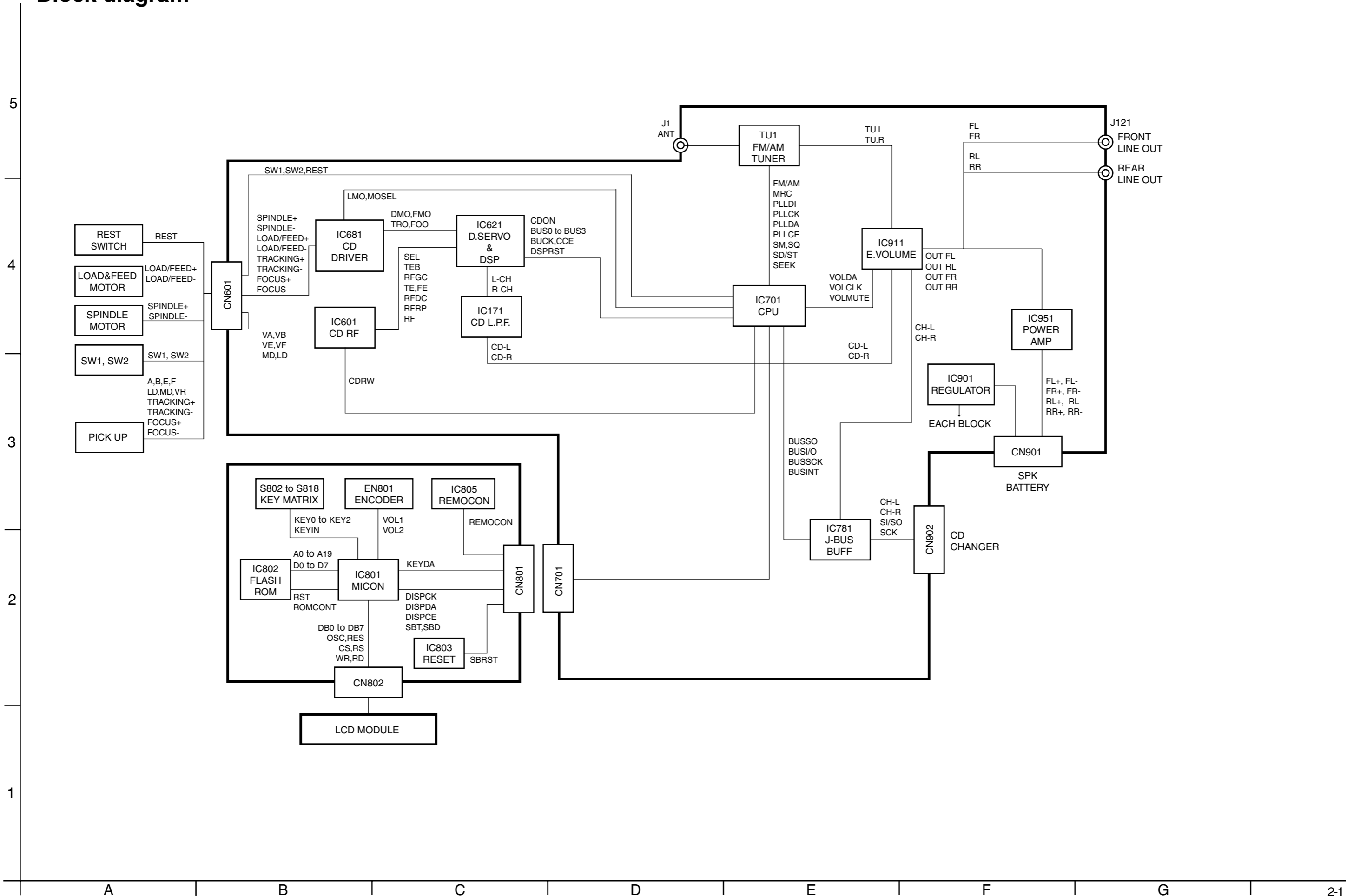
Block diagram	2-1
Standard schematic diagrams	2-2
Printed circuit boards	2-5~7

Safety precaution

 **CAUTION** Burrs formed during molding may be left over on some parts of the chassis. Therefore, pay attention to such burrs in the case of performing repair of this system.

 **CAUTION** Please use enough caution not to see the beam directly or touch it in case of an adjustment or operation check.

Block diagram



Standard schematic diagrams

Main amplifier section

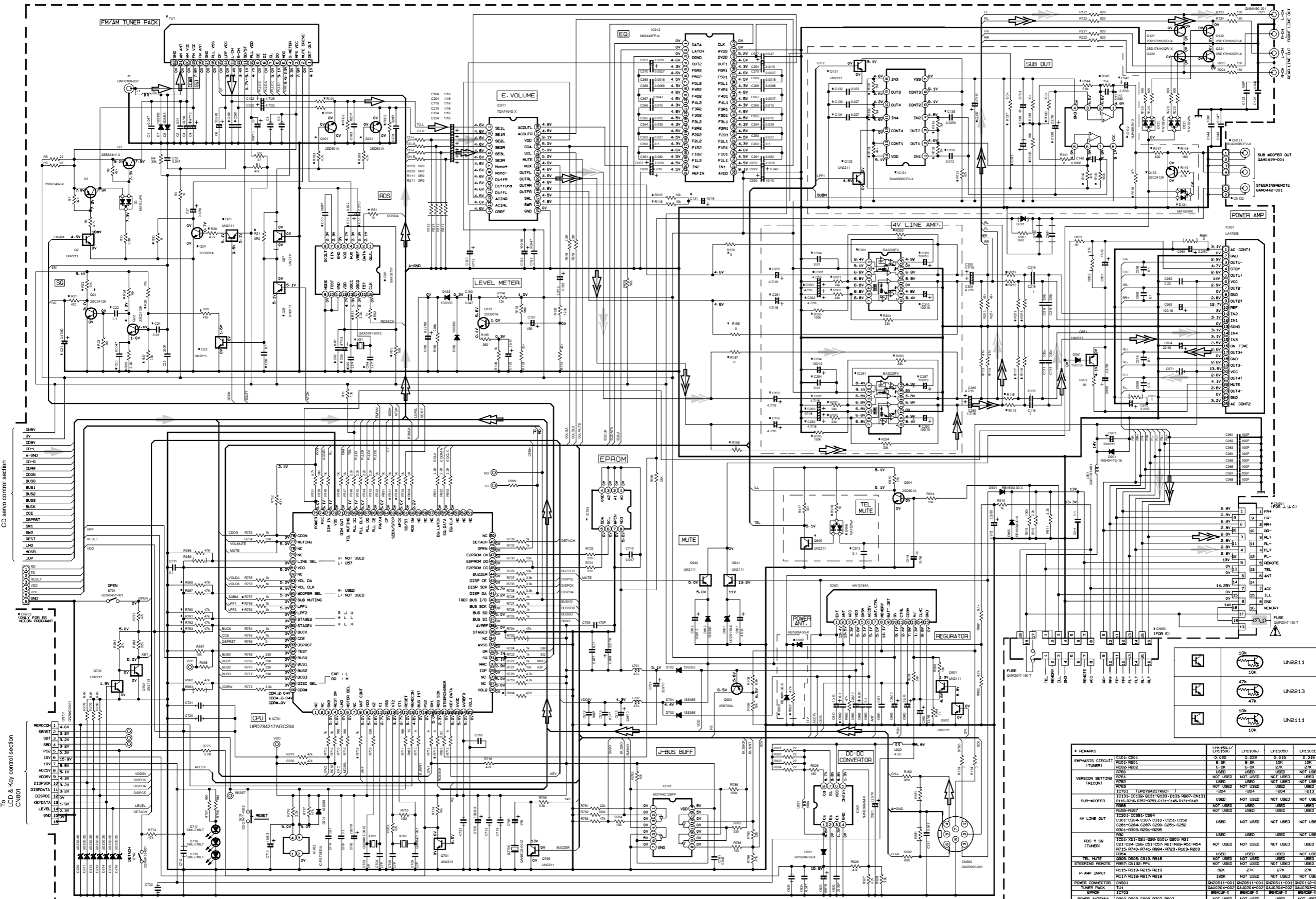
5

4

3

2

1



REMARKS	IC001-C001	LH11001	LH11005	LH1101E
EMPHASIS CIRCUIT (TUNER)	IC001-C001	0-002	0-015	0-015
	R0101-R001	6-2K	6-2K	50K
	R0102-R002	6-2K	6-2K	20K
	R0103	USED	USED	NOT USED
	R0104	NOT USED	NOT USED	USED
	R0105	NOT USED	NOT USED	USED
VERSION SETTING (HOPUP)	R0106	NOT USED	NOT USED	USED
	R0107	NOT USED	NOT USED	USED
	R0108	NOT USED	NOT USED	USED
	R0109	NOT USED	NOT USED	USED
SUB-WOOFER	IC002-C002	USED	USED	NOT USED
	R0110-R0110	USED	USED	USED
	R0111-R0111	USED	USED	USED
	R0112-R0112	USED	USED	USED
4V LINE OUT	IC003-C003	USED	NOT USED	NOT USED
	R0113-R0113	USED	NOT USED	NOT USED
	R0114-R0114	USED	NOT USED	NOT USED
	R0115-R0115	USED	NOT USED	NOT USED
	R0116-R0116	USED	NOT USED	NOT USED
	R0117-R0117	USED	NOT USED	NOT USED
	R0118-R0118	USED	NOT USED	NOT USED
	R0119-R0119	USED	NOT USED	NOT USED
	R0120-R0120	USED	NOT USED	NOT USED
	R0121-R0121	USED	NOT USED	NOT USED
	R0122-R0122	USED	NOT USED	NOT USED
	R0123-R0123	USED	NOT USED	NOT USED
	R0124-R0124	USED	NOT USED	NOT USED
	R0125-R0125	USED	NOT USED	NOT USED
	R0126-R0126	USED	NOT USED	NOT USED
	R0127-R0127	USED	NOT USED	NOT USED
	R0128-R0128	USED	NOT USED	NOT USED
	R0129-R0129	USED	NOT USED	NOT USED
	R0130-R0130	USED	NOT USED	NOT USED
	R0131-R0131	USED	NOT USED	NOT USED
	R0132-R0132	USED	NOT USED	NOT USED
	R0133-R0133	USED	NOT USED	NOT USED
	R0134-R0134	USED	NOT USED	NOT USED
	R0135-R0135	USED	NOT USED	NOT USED
	R0136-R0136	USED	NOT USED	NOT USED
	R0137-R0137	USED	NOT USED	NOT USED
	R0138-R0138	USED	NOT USED	NOT USED
	R0139-R0139	USED	NOT USED	NOT USED
	R0140-R0140	USED	NOT USED	NOT USED
	R0141-R0141	USED	NOT USED	NOT USED
	R0142-R0142	USED	NOT USED	NOT USED
	R0143-R0143	USED	NOT USED	NOT USED
	R0144-R0144	USED	NOT USED	NOT USED
	R0145-R0145	USED	NOT USED	NOT USED
	R0146-R0146	USED	NOT USED	NOT USED
	R0147-R0147	USED	NOT USED	NOT USED
	R0148-R0148	USED	NOT USED	NOT USED
	R0149-R0149	USED	NOT USED	NOT USED
	R0150-R0150	USED	NOT USED	NOT USED
	R0151-R0151	USED	NOT USED	NOT USED
	R0152-R0152	USED	NOT USED	NOT USED
	R0153-R0153	USED	NOT USED	NOT USED
	R0154-R0154	USED	NOT USED	NOT USED
	R0155-R0155	USED	NOT USED	NOT USED
	R0156-R0156	USED	NOT USED	NOT USED
	R0157-R0157	USED	NOT USED	NOT USED
	R0158-R0158	USED	NOT USED	NOT USED
	R0159-R0159	USED	NOT USED	NOT USED
	R0160-R0160	USED	NOT USED	NOT USED
	R0161-R0161	USED	NOT USED	NOT USED
	R0162-R0162	USED	NOT USED	NOT USED
	R0163-R0163	USED	NOT USED	NOT USED
	R0164-R0164	USED	NOT USED	NOT USED
	R0165-R0165	USED	NOT USED	NOT USED
	R0166-R0166	USED	NOT USED	NOT USED
	R0167-R0167	USED	NOT USED	NOT USED
	R0168-R0168	USED	NOT USED	NOT USED
	R0169-R0169	USED	NOT USED	NOT USED
	R0170-R0170	USED	NOT USED	NOT USED
	R0171-R0171	USED	NOT USED	NOT USED
	R0172-R0172	USED	NOT USED	NOT USED
	R0173-R0173	USED	NOT USED	NOT USED
	R0174-R0174	USED	NOT USED	NOT USED
	R0175-R0175	USED	NOT USED	NOT USED
	R0176-R0176	USED	NOT USED	NOT USED
	R0177-R0177	USED	NOT USED	NOT USED
	R0178-R0178	USED	NOT USED	NOT USED
	R0179-R0179	USED	NOT USED	NOT USED
	R0180-R0180	USED	NOT USED	NOT USED
	R0181-R0181	USED	NOT USED	NOT USED
	R0182-R0182	USED	NOT USED	NOT USED
	R0183-R0183	USED	NOT USED	NOT USED
	R0184-R0184	USED	NOT USED	NOT USED
	R0185-R0185	USED	NOT USED	NOT USED
	R0186-R0186	USED	NOT USED	NOT USED
	R0187-R0187	USED	NOT USED	NOT USED
	R0188-R0188	USED	NOT USED	NOT USED
	R0189-R0189	USED	NOT USED	NOT USED
	R0190-R0190	USED	NOT USED	NOT USED
	R0191-R0191	USED	NOT USED	NOT USED
	R0192-R0192	USED	NOT USED	NOT USED
	R0193-R0193	USED	NOT USED	NOT USED
	R0194-R0194	USED	NOT USED	NOT USED
	R0195-R0195	USED	NOT USED	NOT USED
	R0196-R0196	USED	NOT USED	NOT USED
	R0197-R0197	USED	NOT USED	NOT USED
	R0198-R0198	USED	NOT USED	NOT USED
	R0199-R0199	USED	NOT USED	NOT USED
	R0200-R0200	USED	NOT USED	NOT USED
	R0201-R0201	USED	NOT USED	NOT USED
	R0202-R0202	USED	NOT USED	NOT USED
	R0203-R0203	USED	NOT USED	NOT USED
	R0204-R0204	USED	NOT USED	NOT USED
	R0205-R0205	USED	NOT USED	NOT USED
	R0206-R0206	USED	NOT USED	NOT USED
	R0207-R0207	USED	NOT USED	NOT USED
	R0208-R0208	USED	NOT USED	NOT USED
	R0209-R0209	USED	NOT USED	NOT USED
	R0210-R0210	USED	NOT USED	NOT USED
	R0211-R0211	USED	NOT USED	NOT USED
	R0212-R0212	USED	NOT USED	NOT USED
	R0213-R0213	USED	NOT USED	NOT USED
	R0214-R0214	USED	NOT USED	NOT USED
	R0215-R0215	USED	NOT USED	NOT USED
	R0216-R0216	USED	NOT USED	NOT USED
	R0217-R0217	USED	NOT USED	NOT USED
	R0218-R0218	USED	NOT USED	NOT USED
	R0219-R0219	USED	NOT USED	NOT USED
	R0220-R0220	USED	NOT USED	NOT USED
	R0221-R0221	USED	NOT USED	NOT USED
	R0222-R0222	USED	NOT USED	NOT USED
	R0223-R0223	USED	NOT USED	NOT USED
	R0224-R0224	USED	NOT USED	NOT USED
	R0225-R0225	USED	NOT USED	NOT USED
	R0226-R0226	USED	NOT USED	NOT USED
	R0227-R0227	USED	NOT USED	NOT USED
	R0228-R0228	USED	NOT USED	NOT USED
	R0229-R0229	USED	NOT USED	NOT USED
	R0230-R0230	USED	NOT USED	NOT USED
	R0231-R0231	USED	NOT USED	NOT USED
	R0232-R0232	USED	NOT USED	NOT USED
	R0233-R0233	USED	NOT USED	NOT USED
	R0234-R0234	USED	NOT USED	NOT USED
	R0235-R0235	USED	NOT USED	NOT USED
	R0236-R0236	USED	NOT USED	NOT USED
	R0237-R0237	USED	NOT USED	NOT USED
	R0238-R0238	USED	NOT USED	NOT USED
	R0239-R0239	USED	NOT USED	NOT USED
	R0240-R0240	USED	NOT USED	NOT USED
	R0241-R0241	USED	NOT USED	NOT USED
	R0242-R0242	USED	NOT USED	NOT USED
	R0243-R0243	USED	NOT USED	NOT USED
	R0244-R0244	USED	NOT USED	NOT USED
	R0245-R0245	USED	NOT USED	NOT USED
	R0246-R0246	USED	NOT USED	NOT USED
	R0247-R0247	USED	NOT USED	NOT USED
	R0248-R0248	USED	NOT USED	NOT USED
	R0249-R0249	USED	NOT USED	NOT USED
	R0250-R0250	USED	NOT USED	NOT USED
	R0251-R0251	USED	NOT USED	NOT USED
	R0252-R0252	USED	NOT USED	NOT USED
	R0253-R0253	USED	NOT USED	NOT USED
	R0254-R0254	USED	NOT USED	NOT USED
	R0255-R0255	USED	NOT USED	NOT USED
	R0256-R0256	USED	NOT USED	NOT USED
	R0257-R0257	USED	NOT USED	NOT USED
	R0258-R0258	USED	NOT USED	NOT USED
	R0259-R0259	USED	NOT USED	NOT USED
	R0260-R0260	USED	NOT USED	NOT USED
	R0261-R0261	USED	NOT USED	NOT USED
	R0262-R0262	USED	NOT USED	NOT USED
	R0263-R0263	USED	NOT USED	NOT USED
	R0264-R0264	USED	NOT USED	NOT USED
	R0265-R0265	USED	NOT USED	NOT USED
	R0266-R0266	USED	NOT USED	NOT USED
	R0267-R0267	USED	NOT USED	NOT USED
	R0268-R0268	USED	NOT USED	NOT USED
	R0269-R0269	USED	NOT USED	NOT USED
	R0270-R0270	USED	NOT USED	NOT USED
	R0271-R0271	USED	NOT USED	NOT USED
	R0272-R0272	USED	NOT USED	NOT USED
	R0273-R0273	USED	NOT USED	NOT USED
	R0274-R0274	USED	NOT USED	NOT USED
	R0275-R0275	USED	NOT USED	NOT USED
	R0276-R0276	USED	NOT USED	NOT USED
	R0277-R0277	USED	NOT USED	NOT USED
	R0278-R0278	USED	NOT USED	NOT USED
	R0279-R0279	USED	NOT USED	NOT USED
	R0280-R0280	USED	NOT USED	NOT USED
	R0281-R0281	USED	NOT USED	NOT USED
	R0282-R0282	USED	NOT USED	NOT USED
	R0283-R0283	USED	NOT USED	NOT USED
	R0284-R0284	USED	NOT USED	NOT USED
	R0285-R0285	USED	NOT USED	NOT USED
	R0286-R0286	USED	NOT USED	NOT USED
	R0287-R0287	USED	NOT USED	NOT USED
	R0288-R0288	USED	NOT USED	NOT USED
	R0289-R0289	USED	NOT USED	NOT USED
	R0290-R0290	USED	NOT USED	NOT USED
	R0291-R0291	USED	NOT USED	NOT USED
	R0292-R0292	USED	NOT USED	NOT USED
	R0293-R0293	USED	NOT USED	NOT USED
	R0294-R0294	USED	NOT USED	NOT USED
	R0295-R0295	USED	NOT USED	NOT USED
	R0296-R0296	USED	NOT USED	NOT USED
	R0297-R0297	USED	NOT USED	NOT USED
	R0298-R0298	USED	NOT USED	NOT USED
	R0299-R0299	USED	NOT USED	NOT USED
	R0300-R0300	USED	NOT USED	NOT USED
	R0301-R0301	USED	NOT USED	NOT USED
	R0302-R0302	USED	NOT USED	NOT USED
	R0303-R0303	USED	NOT USED	NOT USED
	R0304-R0304	USED	NOT USED	NOT USED
	R0305-R0305	USED	NOT USED	NOT USED
	R0306-R0306	USED	NOT USED	NOT USED
	R0307-R0307	USED	NOT USED	NOT USED
	R0308-R0308	USED	NOT USED	NOT USED
	R0309-R0309	USED	NOT USED	NOT USED
	R0310-R0310	USED	NOT USED	NOT USED
	R0311-R0311	USED	NOT USED	NOT USED
	R0312-R0312	USED	NOT USED	NOT USED
	R0313-R0313	USED	NOT USED	NOT USED
	R0314-R0314	USED	NOT USED	NOT USED
	R0315-R0315	USED	NOT USED	NOT USED
	R0316-R0316	USED	NOT USED	NOT USED
	R0317-R0317	USED	NOT USED	NOT USED
	R0318-R0318	USED	NOT USED	NOT USED
	R0319-R0319	USED	NOT USED	NOT USED
	R0320-R0320	USED	NOT USED	NOT USED
	R0321-R0321	USED	NOT USED	NOT USED
	R0322-R0322	USED	NOT USED	NOT USED
	R0323-R0323	USED	NOT USED	NOT USED
	R0324-R0324	USED	NOT USED	NOT USED

CD servo control section

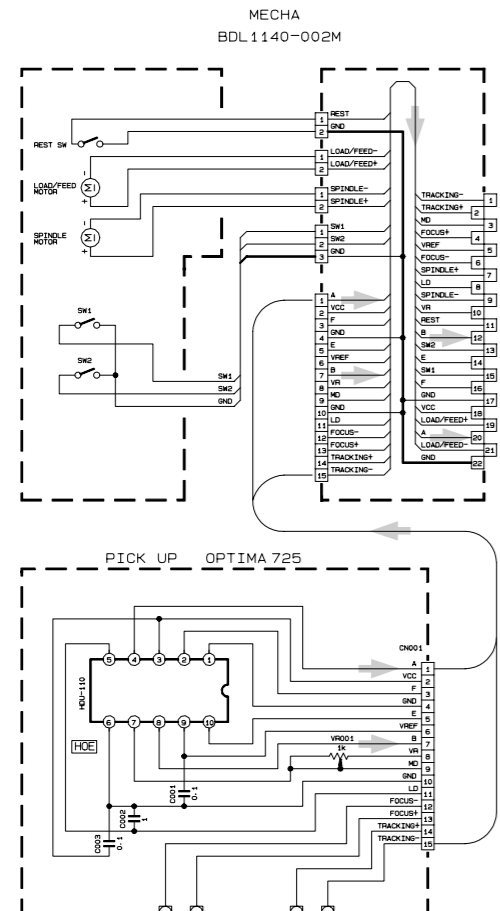
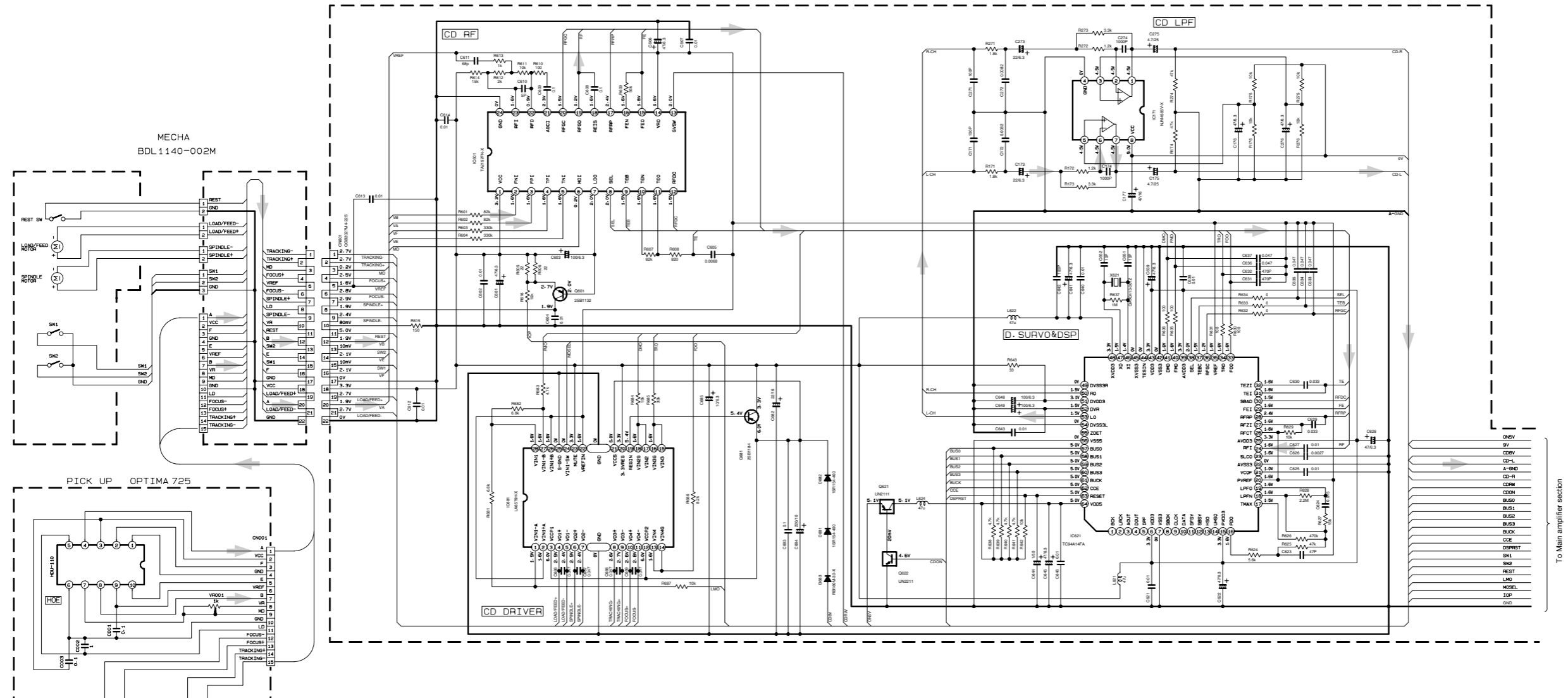
5

4

3

2

1



CD signal

	10k		UN211
	10k		UN213
	47k		UN211
	10k		UN211

NOTES
 1. VOLTAGES ARE DC-MEASURED WITH A DIGITAL VOLT METER WITHOUT INPUT SIGNAL. CONDITION --- CD MODE.
 2. UNLESS OTHERWISE SPECIFIED:
 ALL RESISTORS ARE 1/16W OR 1/10W OR 1/8W 45° METAL GLAZE RESISTOR.
 ALL CAPACITORS ARE 50V OR 25V OR 16V CERAMIC CAPACITOR OR 50V MYLAR CAPACITOR.
 ALL RESISTANCE VALUES ARE IN OHMS (Ω).
 ALL CAPACITANCE VALUES ARE IN pF (pF).
 ALL E-CAPACITORS ARE SHOWN IN THE FORM OF CAPACITANCE (pF)/RATED VOLTAGE (V).

To Main amplifier section

LCD & Key control section

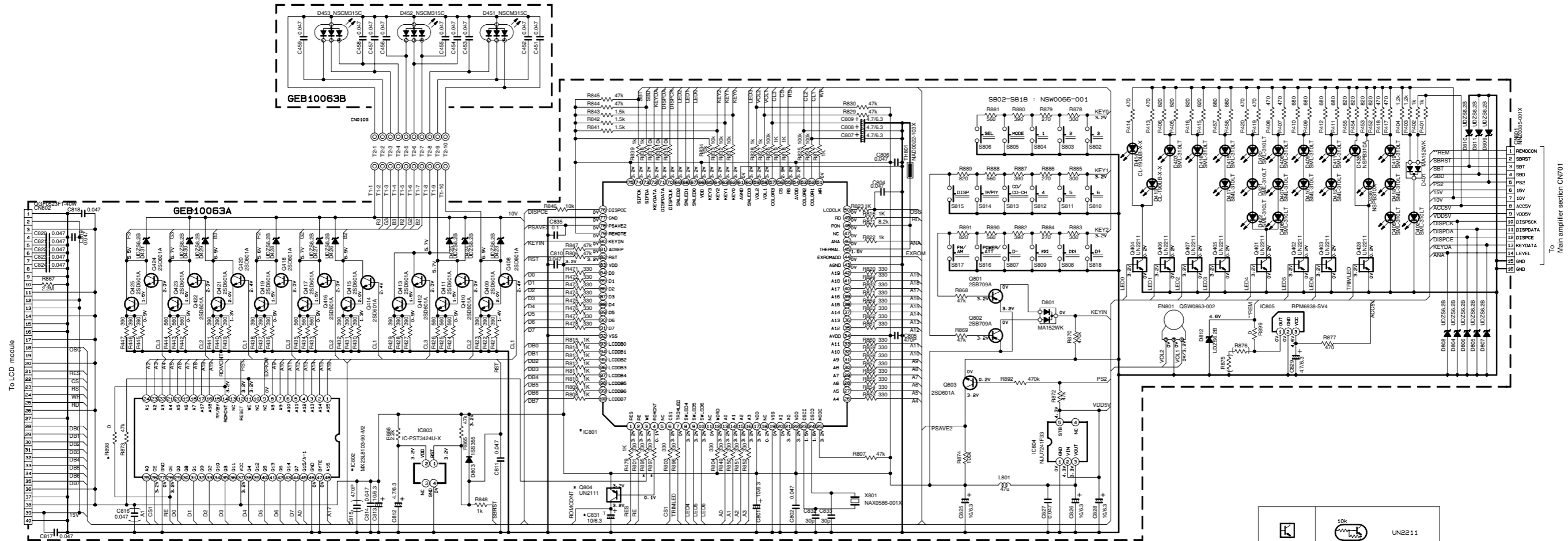
5

4

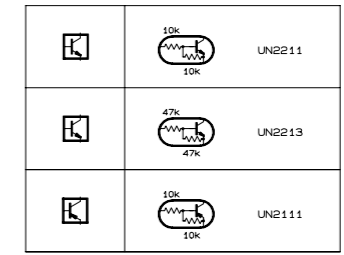
3

2

1



*PWB : GEB10063-001A11



REMARKS	NO-LH1100/LH1104 SERIES/NO-LH1100/LH1104 SERIES	NO-LH1102/LH1106 SERIES/NO-LH1100/LH1104 SERIES
FLASH ROM	IC802 MK23L8103-90-M2	LH8P160B-MET92
	GR04 NO USED	USED
	CB31 NO USED	USED
	RR95 NO USED	USED
	RR97 NO USED	USED
	RR98 NO USED	USED
MICCN	IC801 MW102M60KH	MW102M60K2

- NOTES
- VOLTAGES ARE DC-MEASURED WITH A DIGITAL VOLT METER WITHOUT INPUT SIGNAL.
CONDITION --- CD MODE
 - UNLESS OTHERWISE SPECIFIED:
ALL RESISTORS ARE 1/16W OR 1/10W OR 1/8W ±5% METAL GLAZE RESISTOR.
ALL CAPACITORS ARE 50V OR 25V OR 16V CERAMIC CAPACITOR OR 50V MYLAR CAPACITOR.
ALL RESISTANCE VALUES ARE IN Ω(MΩ).
ALL CAPACITANCE VALUES ARE IN pF(pF).
ALL E-CAPACITORS ARE SHOWN IN THE FORM OF CAPACITANCE(μF)/RATED VOLTAGE (V).

Printed circuit boards

■ Main board

5

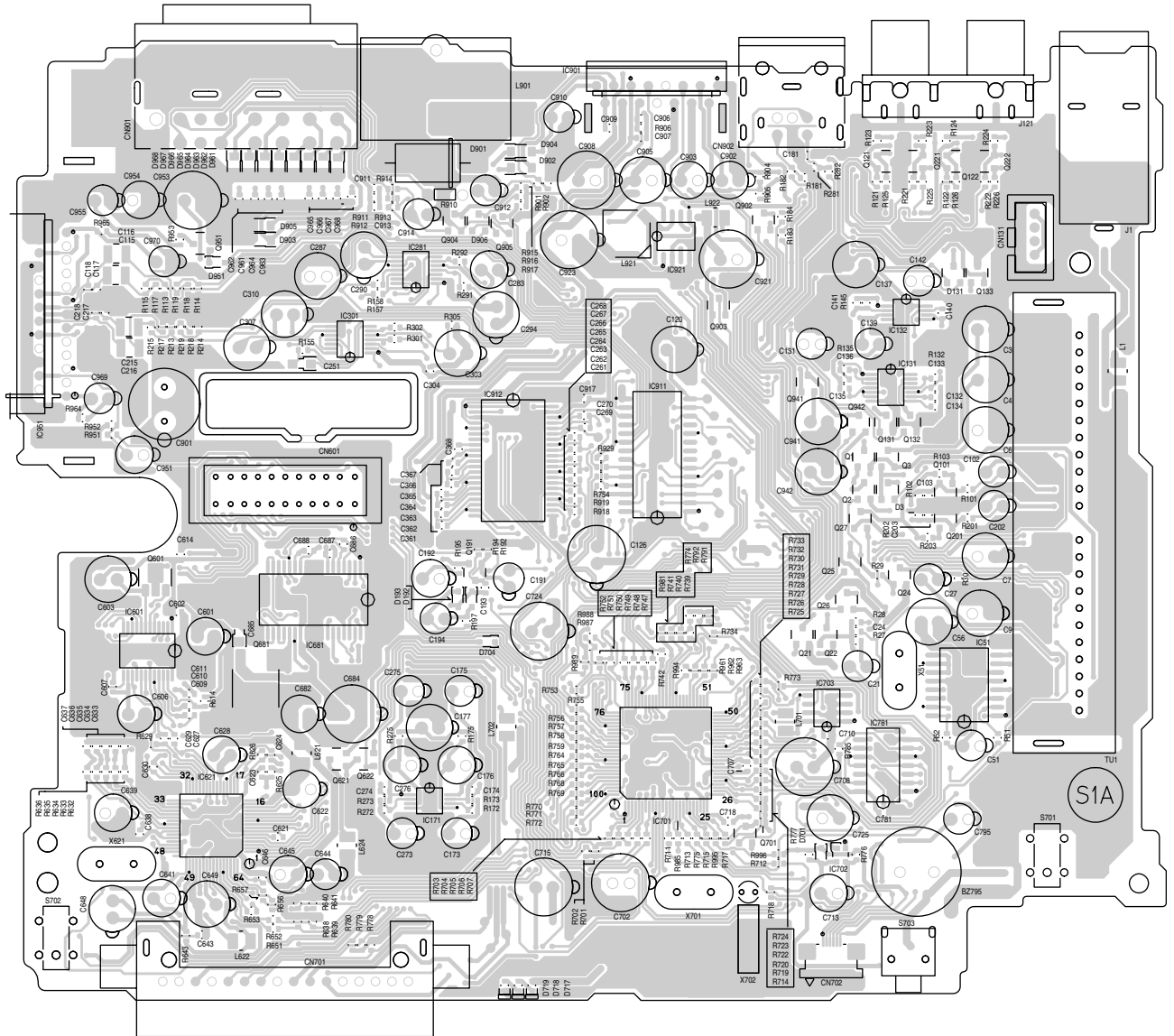
Forward side

4

3

2

1



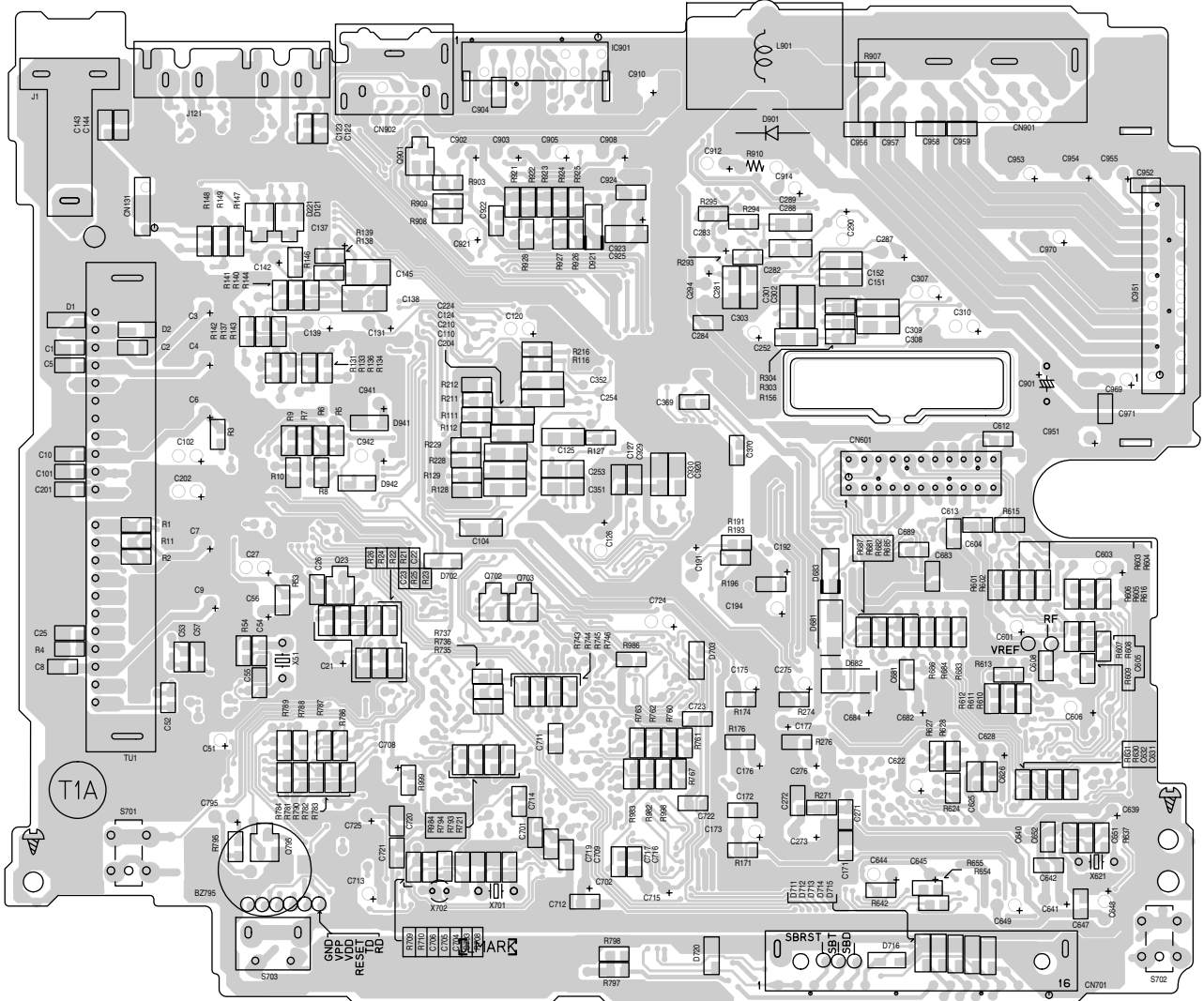
A

B

C

■ Main board

Reverse side



5

4

3

2

1

2-6

A

B

C

D

■ Front board

Forward side

Reverse side

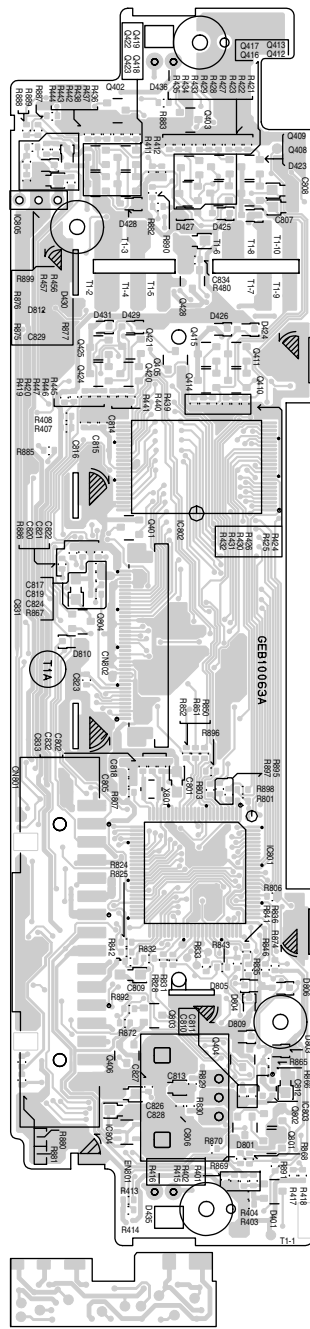
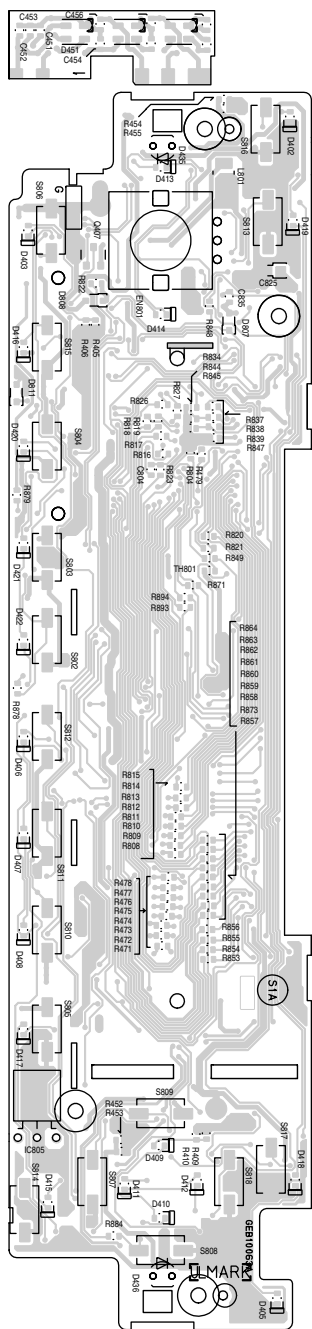
5

4

3

2

1



A

B

C

KD-LH1105

JVC

VICTOR COMPANY OF JAPAN, LIMITED

AV & MULTIMEDIA COMPANY 10-1, 1Chome, Ohwatari-machi, Maebashi-city, 371-8543, Japan

(No.49827SCH)



Printed in Japan
2003/03